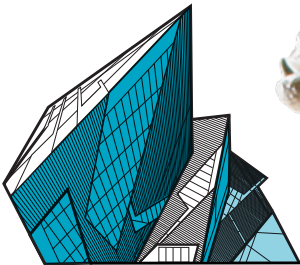


# DINOS, MAMMALS & BIRDS



**Hike the ROM**  
Trail Guide

While OpenROM is underway, some of the galleries and regular routes through the Museum may be temporarily unavailable.

Follow this Trail to experience some of our favourites from the dinosaur world, and their mammal and bird friends.

### **Not sure where to start?**

ROM Map Guides are a good source for gallery locations.

This Trail Guide takes you through the galleries highlighting a selection of dinosaur, mammal, and bird specimens. Take your time with the trail and enjoy not only the stops, but the collections in between.

**ACCESSIBILITY:** Hike the ROM trails are designed to accumulate steps through a walking trail and includes stairs. Accessibility routes may require a visitor to backtrack through a gallery, use an elevator, or require Security's assistance with the use of ROM lifts.



# TRAIL FINISH



12

### LEVEL 2 – DINOS & MAMMALS

Even from a distance, those teeth are unmistakable. Did you know that this *T. rex* specimen was so big that it was moved into the gallery first, before anything else? It's keeping an eye on our OpenROM construction, and we're keeping an eye on it!

We hope you've enjoyed this Trail. Be sure to spend some time in all the galleries – maybe to make your own list of favourites.



11

### LEVEL 2 – DINOS & MAMMALS

Look ahead to the imposing *Mastodon* skeleton. It's big, and it's local. Did you know that Ontario is one of the best places in Canada to find *Mastodon* skeletons?

Continue to the end of the platform in front of the *Mastodon*. Look left across the gallery towards the window.



8

### LEVEL 2 – DAWN OF LIFE

*Dunkleosteus* had a bite force more powerful than a great white shark's and lived approximately 358 million years ago – long before dinosaurs roamed the planet.

Move right out of the Dawn of Life gallery into the Rotunda, up the stairs, and into Biodiversity. Can you find the Extinction case on the left? It's about half-way down.



9

### LEVEL 2 – BIODIVERSITY

One of the most recognizable skeletons in the gallery, the *Dodo*, sits in front of its (much) larger case companion, the extinct *Moa*. While the *Dodo* lived on the island of Mauritius, the *Moa* lived in New Zealand.

Continue to the back of Biodiversity and turn right into the Bird Gallery.



10

### LEVEL 2 – BIRDS

Over 100 birds are represented in this gallery. From the large *Royal Albatross* at the entrance to the tiny, red-throated *Mistletoe Bird* (at the far end of the back case), this collection shows the diversity of birds on the planet, and their evolutionary legacy to prehistoric animals like dinosaurs.

Continue past the Bird Gallery and through the doors on the right to our temporary gallery viewing platform.



7

### LEVEL 2 – DINOSAURS

Don't let size fool you. This was a small, fast predator with a big dino brain, large slicing teeth, and a sickle-shaped talon on each back foot – *Deinonychus*.

Move out of the gallery and head to the entrance to Dawn of Life. Be sure to stop en-route and look *Futalognkosaurus* straight in the eye! Once in Dawn of Life, can you spot the *Dunkleosteus* display right at the entrance?

YOU'RE HALFWAY THERE!



6

### LEVEL 2 – DINOSAURS

Dinosaur skin! Did you know some dinosaur bones have fossilized skin on them? Here is a fossilized skin impression from a duck-billed dinosaur (and a touchable sample so you can experience how it feels).

The next stop is the smallish dinosaur at the end of the display just before leaving the gallery, opposite the construction panels.



4

### LEVEL 2 – DAWN OF LIFE

*Coelophysis* is one of Earth's earliest dinosaurs. It was a theropod, like *Tyrannosaurus rex*!

Continue left out of the Dawn of Life Gallery into the Dinosaur Gallery. Turn to the right of the entrance and find the dinosaur under glass in the alcove. Say hello to *Parksosaurus*.

YOU'RE DOING GREAT!



5

### LEVEL 2 – DINOSAURS

This skeleton of a *Parksosaurus* is a very special dinosaur – it is one of the best skeletons of this type of dino, the bones are almost all REAL, and it is a holotype\* – a very big deal in palaeontology.

Turn back past the entrance, and find the small display almost half way down the other side.

\*A holotype is the first unearthed specimen of a prehistoric species that bears its name.



3

### LEVEL 2 – DAWN OF LIFE

*Dimetrodon*. It looks like a dinosaur, but it's not closely related at all. The hole located behind each eye tells us *Dimetrodon* had an evolutionary link to mammals – like humans.

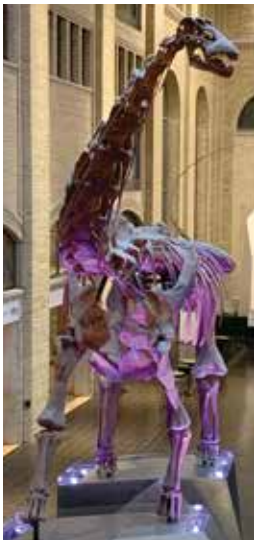
Continue to the back of the gallery, past the red arch. Look to the display on the far right at the back. Can you find the large skeleton on the white wall mount?

2

### LEVEL 1 – CHEN COURT

*Futalognkosaurus*. This is a cast of a titanosaurian dinosaur discovered in Argentina in 2000. The original specimen is one of the most complete giant sauropods ever found.

Take the elevator (or the Stair of Wonders) to Level 2. Turn left into the Dawn of Life Gallery and head about halfway back. Can you find the large skeleton with the fan-like arch on its back?



1

### LEVEL 1 – CURRELLY

We start with a hadrosaur (duck-billed) dinosaur - *Prosaurolophus maximus*. It is a hadrosaurine type of duck-billed dino, distinguished by its flat, uncrested, skull. This specimen was collected over 100 years ago.

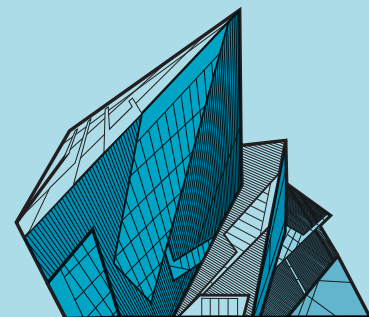
Make your way across Currelly Gallery into Chen Court and look up. Way up.



TRAILHEAD STARTS HERE



# DINOS, MAMMALS & BIRDS



# **Congratulations, you did it!**

**Now enjoy a relaxed stroll  
through the rest of our galleries  
and special exhibitions  
during your visit.**

## **Become a Member**

Membership offers unlimited Museum access to visit galleries and exhibitions, walk this Trail again, or blaze one filled with your personal favourites. Visit the Membership desk at the entrance and ask us how you can turn your admission ticket into a membership today.

**[joinROM.ca](https://joinROM.ca)**

The logo for the Royal Ontario Museum (ROM), consisting of the letters 'ROM' in a bold, black, sans-serif font.